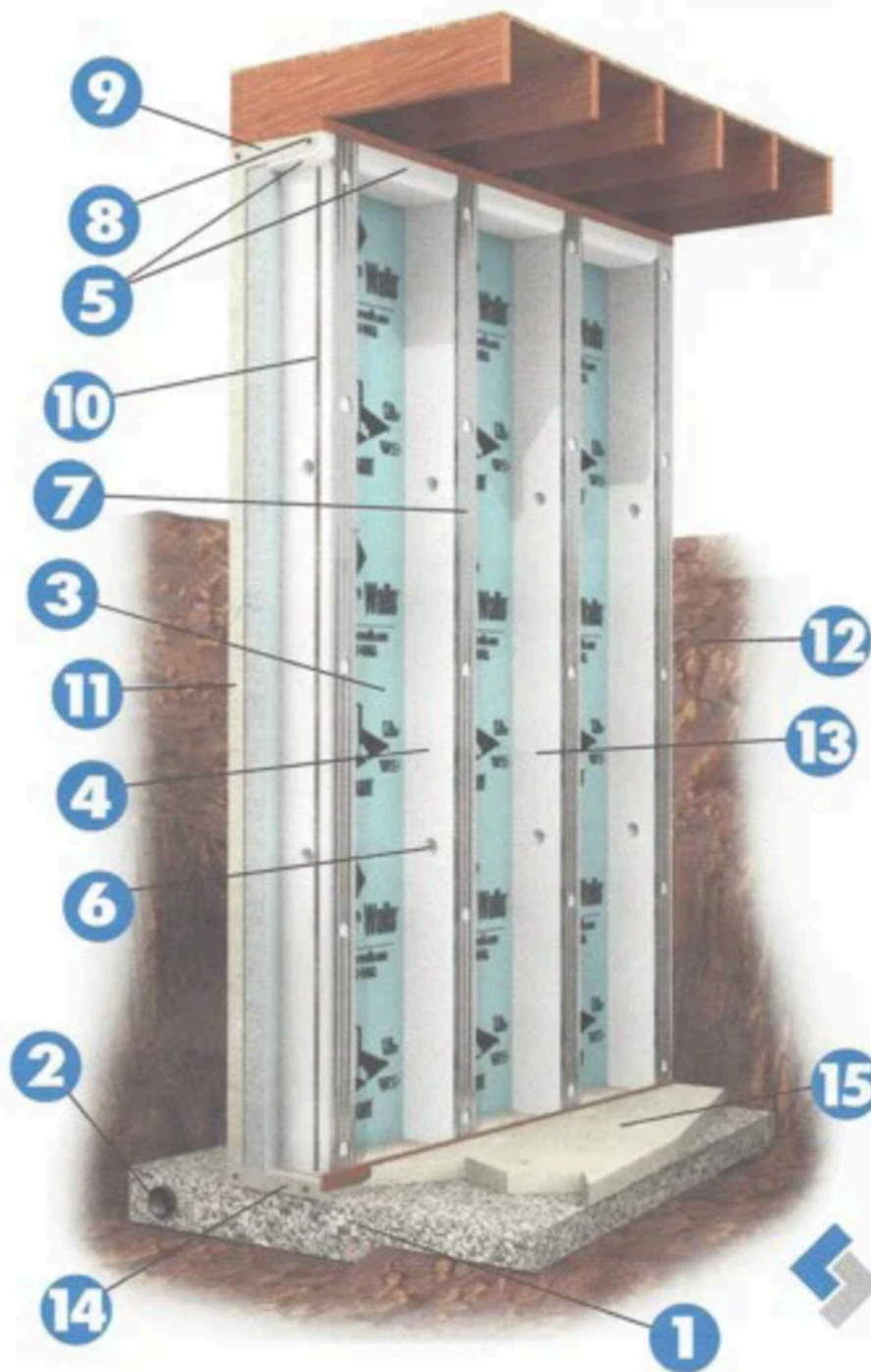


# THE BEST SOLUTION



## SUPERIOR WALLS Xi FOUNDATION SYSTEM



### DRY

Your permanent barrier against sidewall water penetration

- 1 Clean Crushed Stone Footing
- 2 Auxiliary Drain Pipe
- 3 Superior Sealant<sup>®</sup> Applied in All Joints for Permanent Moisture Barrier

### WARM

Warmer in winter, cooler in summer... reduces your home's energy loss

- 3 2-1/2" Dow<sup>®</sup> Extruded Polystyrene Insulation
- 4 1" Foam Insulated Concrete Studs
- 5 1" Foam Insulation on Bond Beam

### SMART

Ready to finish...with pre-engineered access built-in

- 6 Access Holes for Ease in Wiring and Plumbing
- 7 Galvanized Steel Stud Facing Ready for Drywall Finishing
- 8 CAD Custom-Designed to Virtually Any Home Style
- 9 Laser-Leveled to be Plumb, Level, Square
- 10 Installs on Your Site in Just Hours for Time and Money Savings
- 11 America's Strongest Foundation Guarantee\*

### SUPERIOR

Steel reinforced...and backed by the industry's strongest guarantee\*

- 12 5,000+ PSI Concrete for Superior Strength
- 13 Horizontal Steel Rebar Inside Top and Bottom Beams
- 14 Steel Reinforced Top Bond Beam
- 15 Vertical Steel Rebar (Inside Each Stud)
- 16 1-3/4" Concrete Face Shell
- 17 10-1/4" Overall Wall Thickness
- 18 Steel Reinforced Concrete Studs
- 19 Steel Reinforced Footer Beam
- 20 Concrete Floor

Special Note: Items 8, 12, & 15 as well as the joint flooring system are provided on site per Superior Walls specifications by builder and contractors as an integral part of the Superior Walls foundation system.

\*See the limited warranty. Contact your local Superior Walls representative for details.



## Superior Walls<sup>®</sup>

THE FOUNDATION  
OF EVERY SUPERIOR NEW HOME<sup>™</sup>

[www.superiorwalls.com](http://www.superiorwalls.com)