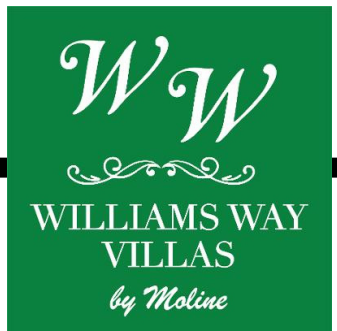


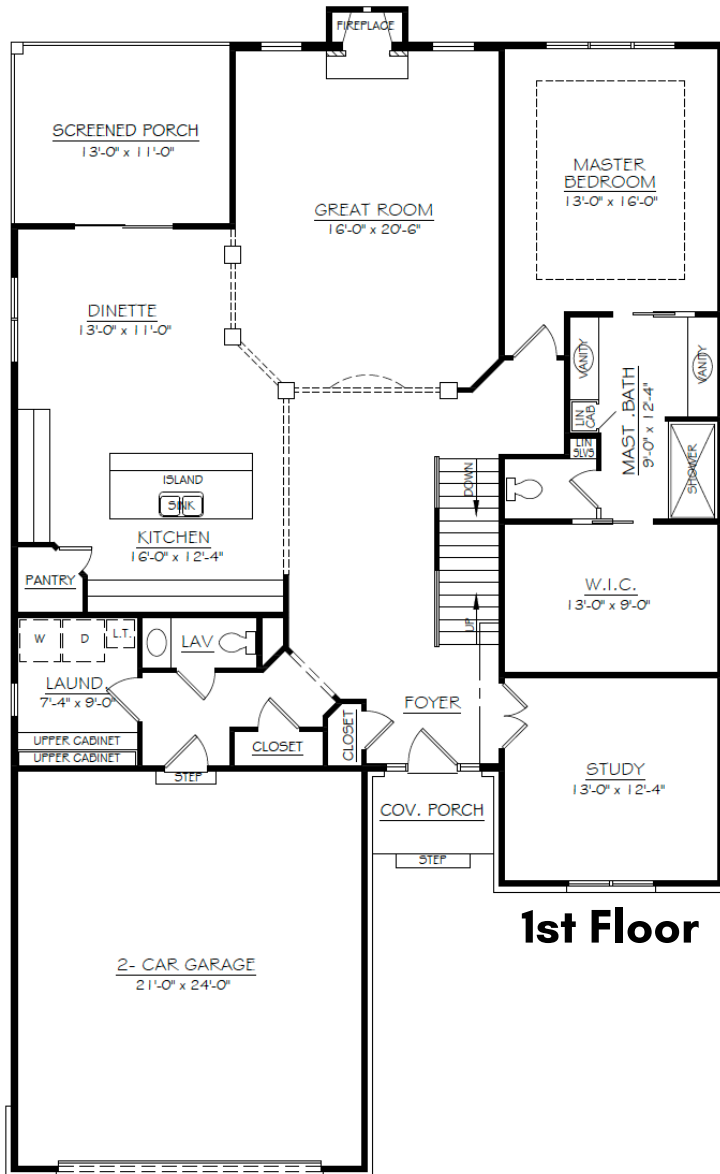
The Overlook South (A)



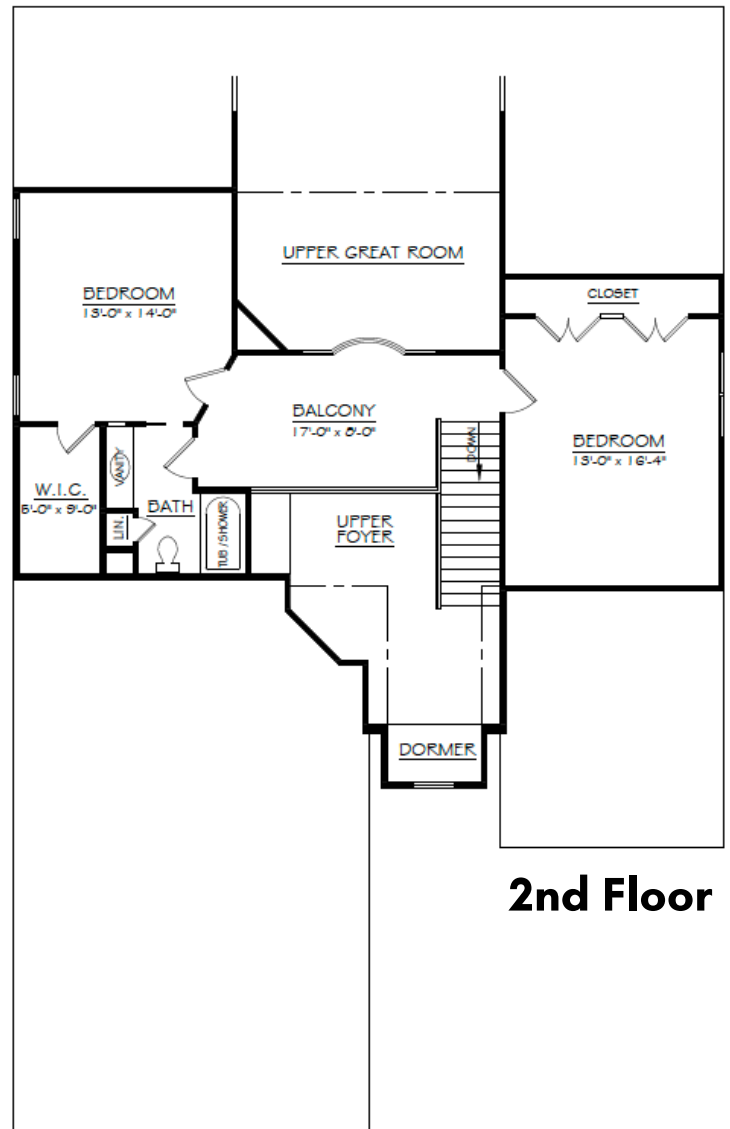
2,535 total sq. ft. (base size)

3 bedrooms / 2.5 baths

1 & 1/2 Story plan with two options available!



1st Floor



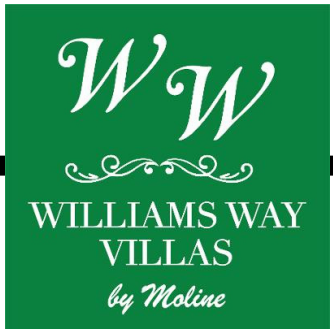
2nd Floor

Floor plans can be resized & customized

Square footage shown is approximate and does NOT include basement, garage or porch areas.



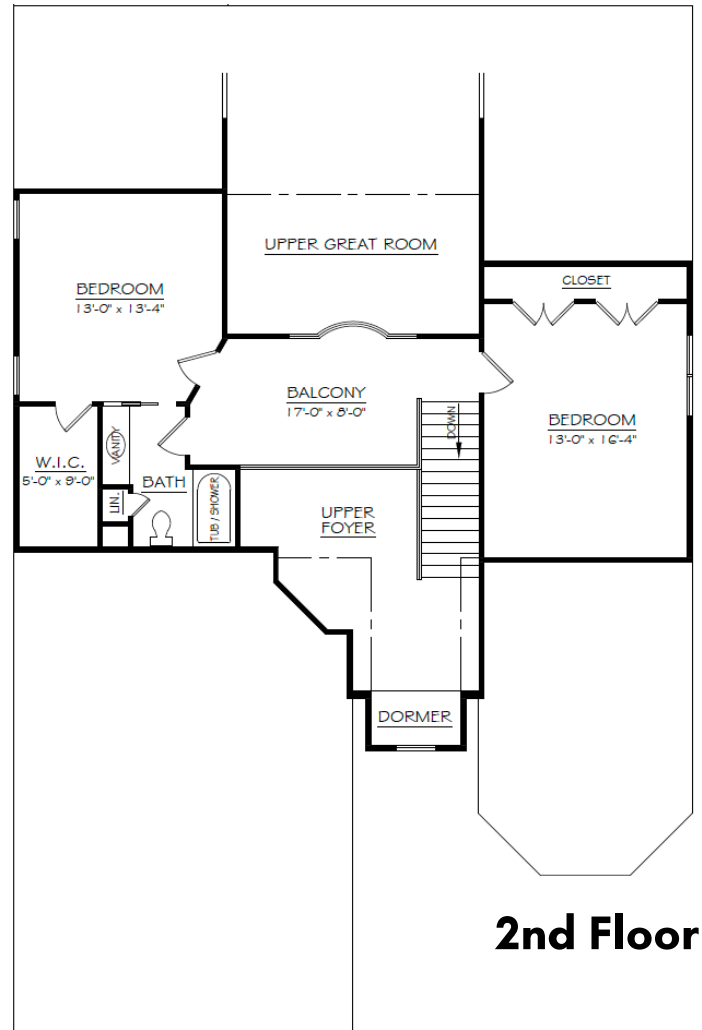
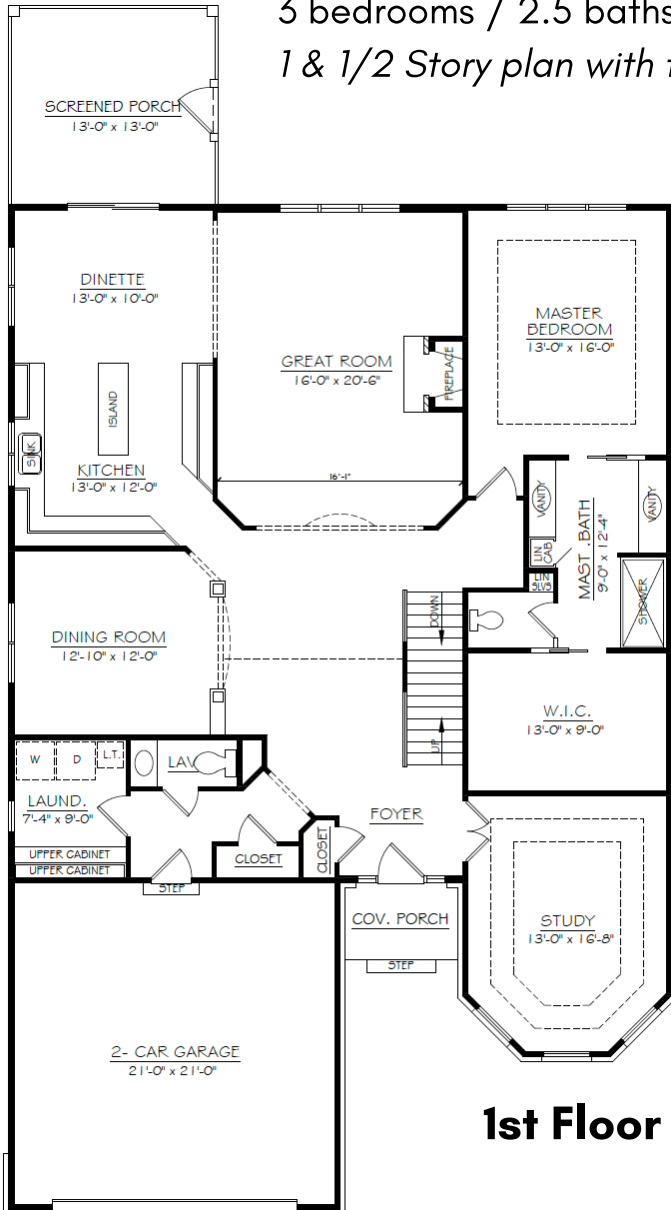
The Overlook South (B)



2,715 total sq. ft. (base size)

3 bedrooms / 2.5 baths

1 & 1/2 Story plan with two options available!



Floor plans can be resized & customized

Square footage shown is approximate and does NOT include basement, garage or porch areas.

